



Confidence in a connected world.

# **Delivering Integrated Security, Recovery, and Archive Protection with Symantec Backup Exec™ 12.5**



# Delivering Integrated Security, Recovery, and Archive Protection with Symantec Backup Exec™ 12.5

## Contents

<b>Introduction</b> .....	<b>4</b>
Symantec Enterprise Vault and Symantec Backup Exec 12.5 .....	4
Symantec Endpoint Protection and Symantec Backup Exec 12.5 .....	4
Symantec Online Storage and Symantec Backup Exec 12.5 .....	5
Symantec Backup Exec System Recovery 8 and Symantec Backup Exec 12.5 .....	5
<b>Symantec Backup Exec 12.5 integration: valuable security, recovery, and archive benefits</b> . . .	<b>6</b>
Backup and recovery of Symantec Enterprise Vault. ....	6
<b>Integrated off-site backup with Symantec Online Storage</b> .....	<b>11</b>
<b>Conclusion</b> .....	<b>13</b>
<b>About Symantec</b> .....	<b>14</b>

# Delivering Integrated Security, Recovery, and Archive Protection with Symantec Backup Exec™ 12.5

## Introduction

For today's businesses, keeping their IT environments properly protected from threats, natural disasters, and even simple human errors is a growing challenge. Symantec Backup Exec™ 12.5 builds bridges to other applications in the Symantec™ family of products, providing valuable integration with market-leading Symantec solutions to deliver complete security, recovery, and archive protection for growing Windows®-based businesses. Symantec Enterprise Vault™, Symantec Endpoint Protection, Symantec Protection Network, and Symantec Backup Exec™ System Recovery easily integrate with and complement your current data protection strategy to keep your data securely backed up—and to help make it easily recoverable when you need it most.

## Symantec Enterprise Vault and Symantec Backup Exec 12.5

Archiving data helps administrators to manage it effectively so that business-critical data can be quickly discovered and recovered. In addition, as data volumes grow ever upwards, email and file system archiving for storage management or compliance purposes may be a requirement. Symantec Enterprise Vault is the market-leading email archiving solution, delivering a software-based intelligent archiving platform that stores, manages, and enables discovery of corporate data from email systems, file server environments, instant messaging platforms, and content management and collaboration systems. Symantec Backup Exec 12.5 now provides complete data protection for Symantec Enterprise Vault archives, helping to ensure that important archived data is always backed up and easily recoverable—and further preventing data loss.

## Symantec Endpoint Protection and Symantec Backup Exec 12.5

To help ensure that businesses are always protected from the latest threats, Symantec has established some of the most comprehensive sources of Internet threat data in the world. The Symantec™ Global Intelligence Network tracks attack activity across the entire Internet. It consists of more than 40,000 sensors, which monitor network activity in over 180 countries. The ThreatCon Indicator, located on the front page of [www.symantec.com](http://www.symantec.com), is an up-to-the-minute summation of the state of security on the Internet. Powered by the Symantec Global Intelligence

## Delivering Integrated Security, Recovery, and Archive Protection with Symantec Backup Exec™ 12.5

Network, Symantec Endpoint Protection 11.0—the leading antivirus solution from Symantec—provides advanced threat prevention and unmatched defense against malware for laptops, desktops, and servers. Symantec Backup Exec 12.5 integrates with Symantec Endpoint Protection, allowing administrators to launch an automated proactive backup whenever the ThreatCon Indicator reaches a pre-selected protection level. This functionality helps to ensure that a clean backup of uninfected data is always available for immediate recovery if a virus or threat does penetrate a system, further protecting business-critical data.

### **Symantec Online Storage and Symantec Backup Exec 12.5**

Off-site storage is a critical part of a comprehensive data protection strategy. With such a strategy in place, a business that suffers a catastrophic loss of data from a site accident such as fire or earthquake can recover—because a copy of the data is stored safely off site. Symantec Online Storage integrates with Symantec Backup Exec 12.5, providing a simple subscription-based off-site storage and recovery method. Now Symantec Backup Exec 12.5 with Symantec Online Storage allows subscribers to store valuable data securely off site, providing a simple, easy-to-manage alternative or complement to an existing storage environment.

### **Symantec Backup Exec System Recovery 8.5 and Symantec Backup Exec 12.5**

A complete data and system recovery strategy is essential in order for businesses to successfully recover from a server failure caused by natural disaster, hardware failure, or simple human error. Symantec Backup Exec System Recovery and Symantec Backup Exec for Windows Servers are two stand-alone solutions that protect a growing IT environment by providing easy-to-manage data and system recovery for businesses based on Windows. The Symantec Backup Exec family of data and system recovery solutions outperforms the competition with a combined feature set that delivers quick and easy granular recovery of business-critical data with Symantec Backup Exec 12.5—plus fast, efficient system recovery in seconds, even to dissimilar hardware and virtual systems with Symantec Backup Exec System Recovery 8.5. To learn how Symantec Backup Exec System Recovery can complement your Symantec Backup Exec data protection implementation, please view the Symantec Backup Exec 12.5 white paper, *Converging Data and System Protection*, at [www.backupexec.com](http://www.backupexec.com).

## Symantec Backup Exec 12.5 integration: valuable security, recovery, and archive benefits

### Backup and recovery of Symantec Enterprise Vault

Symantec Enterprise Vault is the market-leading solution for archiving and Microsoft® Exchange/ file system space management. Protecting a Symantec Enterprise Vault infrastructure—with its databases, file stores, and configuration information—is accomplished with a variety of Symantec Backup Exec agents working together. Symantec Backup Exec 12.5, with its history of simplicity and ease of use, is releasing the first data protection agent specifically designed and engineered to protect a Symantec Enterprise Vault environment.

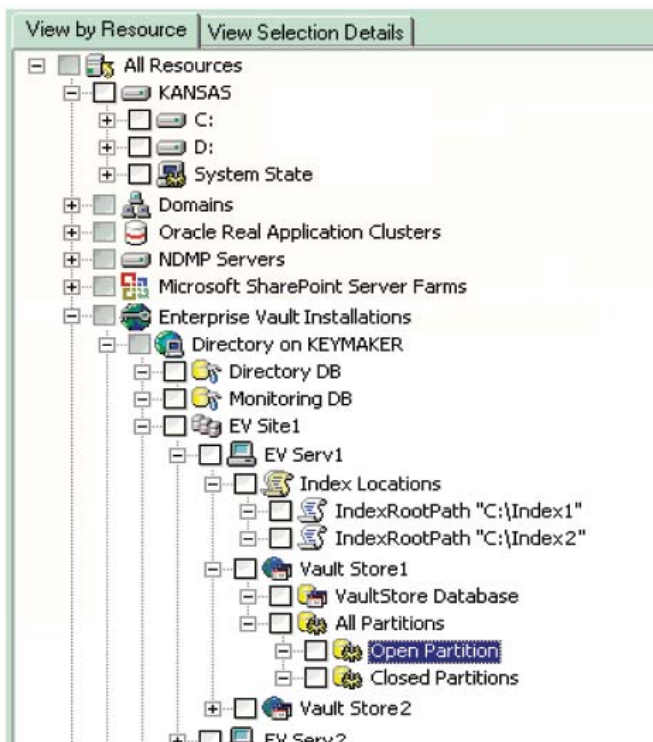
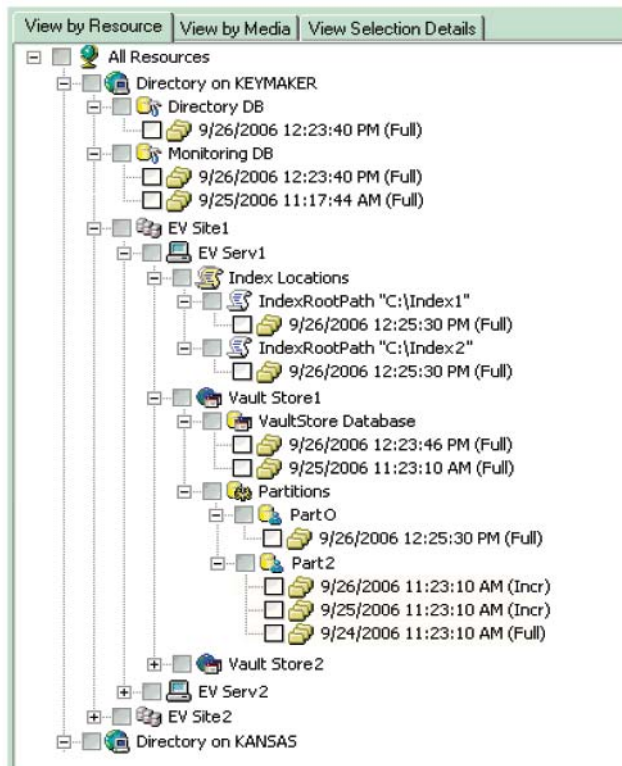


Figure 1. Simple browse-and-select Symantec Enterprise Vault backup process



**Figure 2. Simple browse-and-select Symantec Enterprise Vault recovery process**

With the Symantec Backup Exec Agent for Enterprise Vault, the administrator can, in a single job, back up directory databases, site databases, Vault Store databases, indexes, and open or closed partitions. This complete protection, offered through a single agent and in a single backup job, is designed to provide disaster recovery for the entire Symantec Enterprise Vault infrastructure and all of its elements.

Because the Symantec Backup Exec Agent for Enterprise Vault Systems integrates with Symantec Enterprise Vault, it comprehends the Enterprise Vault architecture, and it can easily determine the relationship between Vault Stores and associated partitions. With this integration, the Symantec Backup Exec Agent for Enterprise Vault offers implicit protection of Vault Stores, protecting Vault Store databases by automatically selecting the appropriate partitions for backup. This implicit protection is also extended upon restore: When a Vault Store database is restored, the associated partitions are automatically selected for restore as well. For backup and restore purposes, there is no need for the administrator to remember the association between

## Delivering Integrated Security, Recovery, and Archive Protection with Symantec Backup Exec™ 12.5

a particular Vault Store database and the partitions. This “implicit protection” approach helps ensure that nothing is missed at backup or recovery time. Best of all, users can perform granular restores of Symantec Enterprise Vault right down to the partition file, folder, and subfolder levels for Symantec Enterprise Vault indexes, helping to ensure that critical data is always easily recoverable.

In addition, Symantec Enterprise Vault has a unique “backup mode” that is required to back up the various components of Symantec Enterprise Vault. The Symantec Backup Exec Agent for Enterprise Vault automatically applies this unique backup mode setting to make sure that each Symantec Enterprise Vault backup job runs successfully. Incremental, differential, and full backup types are supported, as in any other backup job. Typical Symantec Backup Exec properties, such as encryption and compression, can be applied to backup jobs as well.

Symantec Enterprise Vault supports a variety of platforms and configurations, so the Symantec Backup Exec Agent for Enterprise Vault follows suit, offering support for similar operating systems and Enterprise Vault versions:

- Enterprise Vault 7.0 SP1, 7.01, and 7.5
- Windows 2000 and Windows 2003 (x32 and x64)
- SQL 2000 SP3 and SQL 2005 SP2
- Microsoft Cluster Server clusters (2-node)

Note that while Enterprise Vault does not currently support Windows 2008, support is planned and will be delivered soon. The Symantec Backup Exec Agent for Enterprise Vault will be qualified on Windows 2008 shortly after Symantec Enterprise Vault is qualified on that platform.

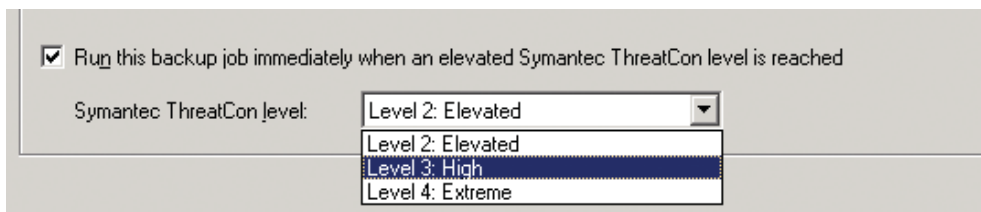
Customers who use NetApp Filers for Partitions can also benefit from the Symantec Backup Exec Agent for Enterprise Vault. These partitions will be backed up via the CIFS file sharing, and CIFS-based backups can take advantage of the single-job methodology of the Symantec Backup Exec Agent for Enterprise Vault. Customers who use NetApp, EMC, or IBM® NAS devices and require the use of NDMP may also do so with the addition of the Symantec Backup Exec NDMP Option; however, because Symantec Backup Exec cannot mix NDMP and non-NDMP backup sources in the same job, separate jobs must be created and managed for the Symantec Enterprise Vault databases, vaults, indexes, and partitions that exist on Windows storage and those that exist on NetApp, EMC, or IBM filer storage.

### ***Integration with Symantec Endpoint Protection and ThreatCon Indicator***

This feature is available to any user of Symantec Backup Exec 12.5 that is connected to the internet or running Symantec Endpoint Protection 11.0. As mentioned, the ThreatCon Indicator received via internet connection or via Symantec Endpoint Protection leverages the worldwide analysis and knowledge base represented by the Symantec Global Intelligence Network, providing valuable threat alerts that protect millions of customers daily from viruses and worms entering their network.

Symantec Backup Exec 12.5 backup jobs can be configured to be triggered when the ThreatCon Indicator reaches a specific level. This response is set as a property of backup jobs and backup templates—so its flexibility is sufficient for almost any method of data protection that Symantec Backup Exec supports.

The administrator enables this feature by checking “Run backup immediately when an elevated Symantec ThreatCon level is reached” and then selecting a ThreatCon level to be designated as that backup threshold. For example, the administrator can set SQL Server backup jobs to start when the ThreatCon Indicator reaches Level 3.



**Figure 3. ThreatCon Indicator backup setting selection in Symantec Backup Exec 12.5**

These backups will run immediately at the highest priority when the ThreatCon Indicator reaches the specified level. Symantec Backup Exec 12.5 with ThreatCon Indicator integration will protect your server, applications, and files before you are even aware that there is a threat against them!

Symantec wants all users to be aware of the fact that these jobs will start immediately, at the highest priority, when the ThreatCon level changes to meet the selected threshold. Alternatively, for added flexibility, an additional “emergency” job can be created using the “Copy Job” function, and ThreatCon protection can be enabled within these copied jobs.

## Delivering Integrated Security, Recovery, and Archive Protection with Symantec Backup Exec™ 12.5

In addition, administrators running Symantec Backup Exec 12.5 and Symantec Endpoint Protection 11.0, security and threat status can be easily viewed through the Symantec Backup Exec Administration Console. This integration requires that both the Symantec Endpoint Protection Client and the Symantec Endpoint Protection Manager be installed on the Symantec Backup Exec Media Server. When these conditions are met, the Symantec Backup Exec Admin Console will display a security summary from within the Job Monitor view.

The security summary will show the following:

- Action summary, including security risks and viruses detected, cleaned, and still existing on Symantec Endpoint Protection 11.0 client systems
- Status summary, including counts for computers with disabled antivirus and tamper protection engines
- Symantec ThreatCon Indicator, top threats, and latest threats
- A listing of the top threats (threats rated Category 3 or higher by ThreatCon)

Symantec Backup Exec 12.5 is hard coded to show the previous 24 hours of Symantec Endpoint Protection Manager status information.

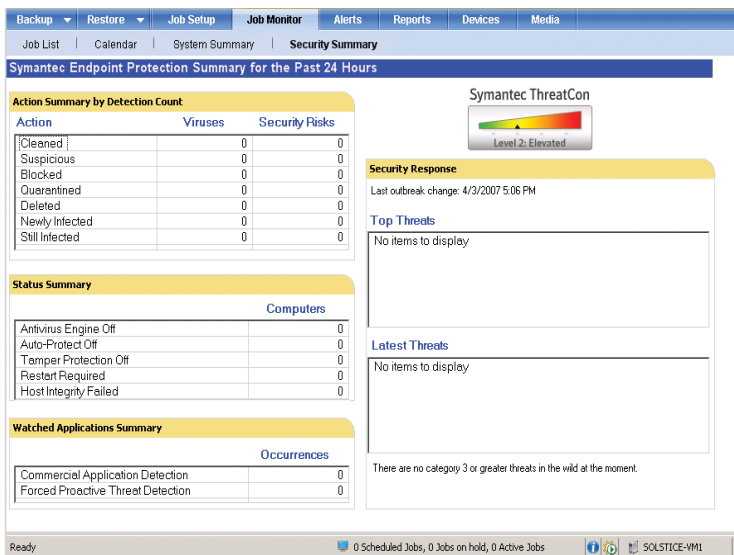


Figure 4. Security summary view in Symantec Backup Exec 12.5

## Delivering Integrated Security, Recovery, and Archive Protection with Symantec Backup Exec™ 12.5

Overall, the integration of Symantec Backup Exec 12.5 ThreatCon driven backups and Symantec Endpoint Protection security summary provides the added security and peace of mind that come from knowing that critical data and systems are protected both proactively and automatically. Now uninfected data can be proactively backed up and always available in case a virus or malware attack penetrates your system. Plus, all of these integrated security features are included with every Symantec Backup Exec 12.5 server license.

### **Integrated off-site backup with Symantec Online Storage**

Symantec Backup Exec 12.5 is the first of many solutions planned for integration with the Symantec Protection Network\*, which provides users with online storage and restoration of business-critical data through the Symantec Online Storage offering. Small and mid-sized companies will benefit from the enterprise-class technology of Symantec Online Storage, which comes without enterprise complexity—or enterprise cost. The integration of Symantec Backup Exec with Symantec Online Storage delivers a solution that allows the administrator to use Symantec Backup Exec for local backup to disk or tape—but also to augment this solution with the off-site backup and disaster recovery capabilities to Symantec Protection Network made possible by Symantec Online Storage integration. Administrators who lack the time or resources to manage off-site storage now can do so easily and transparently.

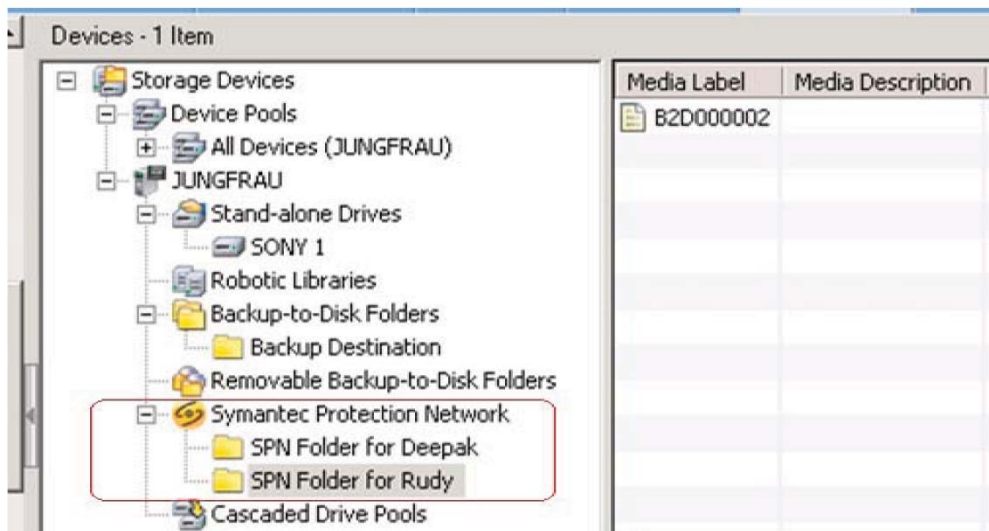
Symantec Online Storage backup jobs are simple and easy to set up through the Symantec Backup Exec 12.5 user interface. First the administrator opens an online account with the Symantec Protection Network\*, using a fast step-by-step signup process based on the volume of data that needs to be stored. Next, the administrator simply downloads and installs the Symantec Protection Network Connector for Backup Exec on the Symantec Backup Exec Media Server. After configuration, the Symantec Online Storage file storage location appears as a backup target within the Symantec Backup Exec administrator's console. It is that simple. Symantec Online Storage destinations are differentiated by the Symantec Protection Network icon, so it is clear where data will be stored—whether locally or within the Symantec Protection Network\*.

---

\*Symantec Protection Network is available in North America only.

## Delivering Integrated Security, Recovery, and Archive Protection with Symantec Backup Exec™ 12.5

In keeping with the theme of this integration effort, the Symantec Online Storage backup location will appear as a target device for duplicate set jobs only. This is meant to bridge the gap that exists between local backups—which are handled admirably by Symantec Backup Exec today—and off-site protection. There is no limitation on the type of data that can be backed up to the Symantec Protection Network: file system data, Exchange databases, Symantec Backup Exec System Recovery Option images, and any other data that Symantec Backup Exec can protect can all be backed up to an off-site location.



**Figure 5. View of Symantec Online Storage backup folders through the Symantec Backup Exec 12.5 console**

Symantec is the foremost security company in the world, so administrators can feel safe and secure with the encryption policies used by Symantec Online Storage. Data is always compressed and encrypted, both while in motion over the LAN or Internet and when at rest in the Symantec Protection Network data centers—so data is kept safe and secure every step of the way.

## Delivering Integrated Security, Recovery, and Archive Protection with Symantec Backup Exec™ 12.5

Data recovery through Symantec Online Storage works just like any other restore through Symantec Backup Exec. Since the contents of the Symantec Backup Exec–Symantec Online Storage can be catalogued, restoration is a simple matter of creating and running a restore job. Restored data can go back to the original location, or it can be redirected to an alternate location.

The Symantec Online Storage adds an extra level of insurance and protection that has been lacking in many data protection strategies to date. Because backup data is stored off site, administrators can rest easier knowing that they are protected in case of a site-wide failure or other disaster. Administrators are also relieved of the burden of shipping and storing tapes off site and managing an off-site tape rotation scheme. With the strong disk-based backup capabilities of Backup Exec, integration with the Symantec Online Storage provides an easy-to-manage alternative to tape-based backups.

### **Conclusion**

Today's businesses must keep their infrastructures up and running 24x7. They must be able to access information anytime and anywhere. That means that the physical systems, the operating environments, and the applications must all be protected across all tiers of the infrastructure. Today, Symantec Backup Exec 12.5 helps businesses confidently protect their infrastructures, their information, and their interactions by delivering integration with market-leading Symantec solutions to efficiently secure, recover, and archive critical information.

## About Symantec

Symantec is a global leader in providing security, storage, and systems management solutions to help businesses and consumers secure and manage their information. Headquartered in Cupertino, Calif., Symantec has operations in more than 40 countries. More information is available at [www.symantec.com](http://www.symantec.com).

For specific country offices and contact numbers, please visit our website. For product information in the U.S., call toll-free 1 (800) 745 6054.

Symantec Corporation  
World Headquarters  
20330 Stevens Creek Boulevard  
Cupertino, CA 95014 USA  
+1 (408) 517 8000  
1 (800) 721 3934  
[www.symantec.com](http://www.symantec.com)

Copyright © 2007, 2008 Symantec Corporation. All rights reserved. Symantec, the Symantec Logo, Backup Exec, and Enterprise Vault are trademarks or registered trademarks of Symantec Corporation or its affiliates in the U.S. and other countries. Microsoft and Windows are either registered trademarks or trademarks of Microsoft Corporation in the United States and/or other countries. IBM is a trademark of International Business Machines Corporation in the United States, other countries, or both. Other names may be trademarks of their respective owners. Printed in the U.S.A.  
10/08 13584573-1